

Clip-Lok reusable box for a large glass and aluminum sculpture

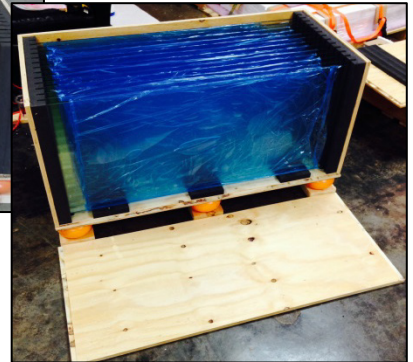
This set of boxes was designed to transport the components of a large glass sculpture. Exactly according to the artist's wishes, robust foam dunnage holds each component in exact position to ensure damage-free transport. Quality plywood, spring steel clips and shock absorbing cushions further ensure full protection.

Clip-Lok boxes:

- are made of certified environment-friendly plywood.
- can be stacked without the need for racking.
- can be reused - typically over 100 transports with normal handling.
- are suitable for transport by road, rail, sea or air.



The sculpture consists of several sheets of cut glass with an aluminum and steel base. It is 183 cm tall and weighs around 600 kg.



This box protects the sheets of glass in an exact fitting PVC foam construction. Skid-Mate cushions mounted under the box absorb shock and vibration to further protect the glass.



This box contains the base of the sculpture. All of the dunnage is integrated in the box so there is no need for additional packaging materials and no waste to dispose of.



This box contains the hardware for the sculpture. Also here, robust fixed foam dunnage secures each part.