

Clip-Lok reusable and collapsible 2P box for truck windshields

The thin, yet strong box sides allow for a packing density of up to 10% more than comparative steel rack constructions. The box can securely transport a varying number of windshields to reduce stock of unique parts. The box is designed to be packed and unpacked by robots for direct mounting in the truck cabin.

Clip-Lok 2P boxes:

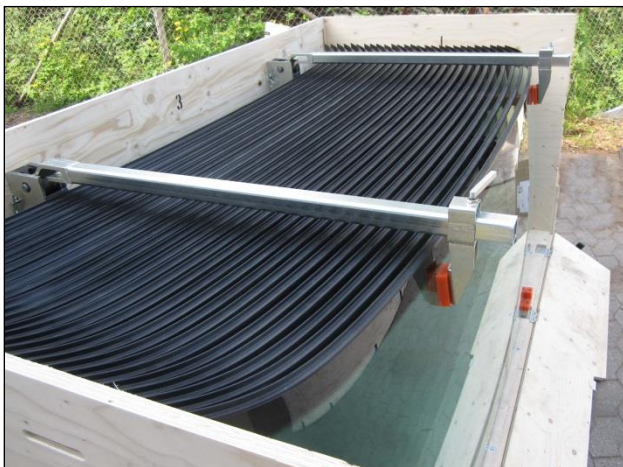
- have only two loose panels and are easy for one person to assemble or dismantle.
- are closed for better protection of sensitive, lacquered or primed products.
- are designed for Just-In-Time and in-sequence delivery.
- are ideal packaging for Lean manufacturing.
- can be stacked without the need for racking.
- can be customized to withstand a pressure of up to 15 tons.
- can be easily and quickly flat-packed, reducing transport and storage volume by up to 80%.
- can be reused - typically over 100 transports with normal handling.



The integrated steel and polyurethane dunnage folds into the box when flat-packing. The spring steel clips are hinged on the panels for easy handling.



The sturdy built-in support bar secures the glass load regardless of the number of windshields being transported.



Custom designed dunnage ensures maximum packing density while providing full protection against scratches.



A fully-loaded box ready for shipment and an emptied, flatpacked box ready for return shipment. The steel pallet gives extra strength for handling by truck.