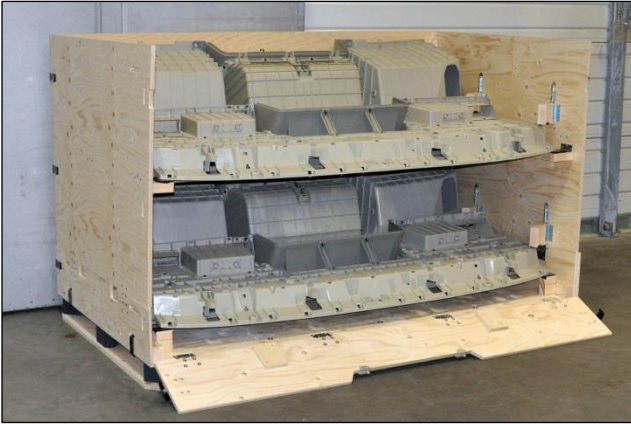


### Clip-Lok reusable and collapsible 2P box for truck front shelves

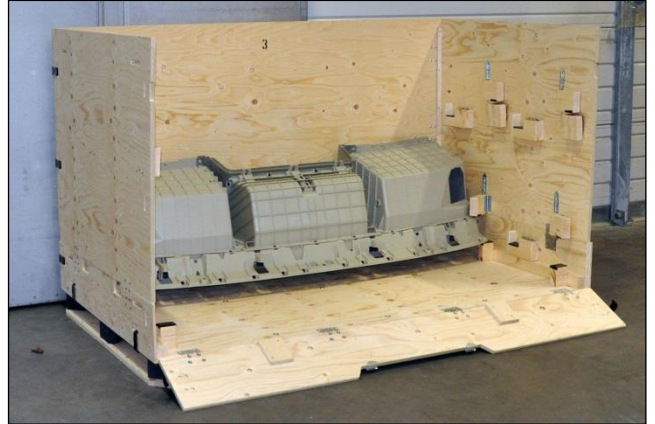
This cost-saving 2P box can hold four front shelves of either the high or the low model. The closed box design provides excellent protection to the sensitive A-surfaces without the need for individual plastic wrapping. The low pallet construction gives better transport economy compared with steel racks.

Clip-Lok 2P boxes:

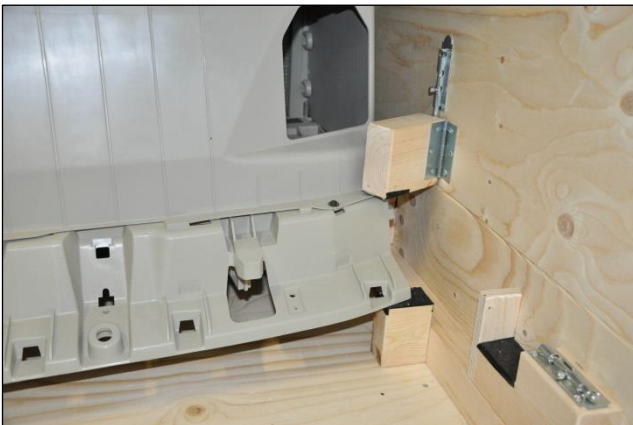
- have spring steel clips which are hinged on the box panels for easy handling.
- have only two loose panels and are easy for one person to assemble and dismantle.
- can be stacked without the need for racking.
- can be customized to withstand a pressure of up to 15 tons.
- can be easily and quickly flat-packed, reducing transport and storage volume by up to 80%.
- can be reused - typically over 100 transports with normal handling.
- are suitable for transport by road, rail, sea or air.



The custom designed Clip-Lok box provides optimum packing density. There is no need for extra packaging material so there is no waste.



Once on the production line, the box is easily opened giving direct access to the parts. Without any further steps such as unwrapping parts, the operator can continue the assembly process maintaining an optimized flow.



Specially designed protective dunnage holds the shelves securely in place and allows easy access on the production line.



The closed box protects the parts from dirt and damage. The flat-packed box is ready for cost-saving return shipment or space-saving storage.