

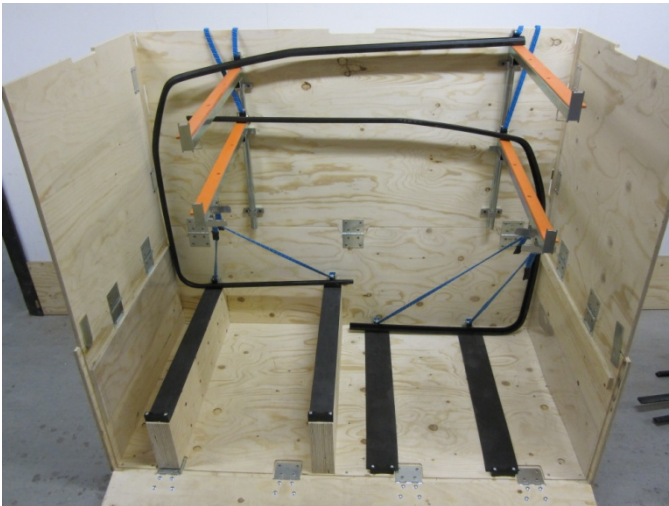


**Product:**

**2P reusable, collapsible Clip-Lok box for door seals**

**Specifications:**

- The Clip-Lok box protects the door seals from deformation during transport
- Cords keep the door seals in place during transport
- The Clip-Lok box can be integrated in Lean Manufacturing
- The Clip-Lok box can carry left and right seals at the same time for use at the line
- The boxes can be stacked on top of each other without the need for racking
- When not in use, Clip-Lok boxes can be easily and quickly flatpacked. This reduces costs and reduces volume by up to 75% on return shipment and storage
- The Clip-Lok box can be used time and again



*The door seals are placed in their original shape to prevent deformation. Left and right seals can be packaged together. The bottom of the seals are supported by blocks.*



*The dunnage protects the door seals from sharp edges and the cords keep the seals in position during transport.*



*The cords lock the door seals onto the support arm.*



*The arms and cords are folded into the box to minimize space. When the Clip-Lok box is collapsed the volume is reduced by up to 75%.*