

# Packaging solutions for the Wind Energy Industry



Cost-saving  Reusable  Collapsible

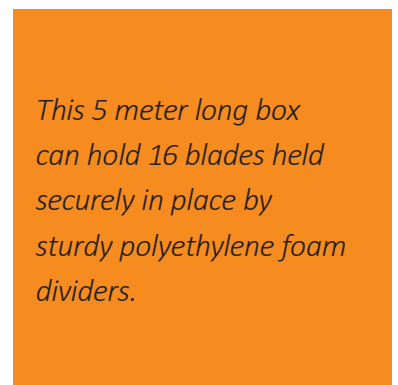
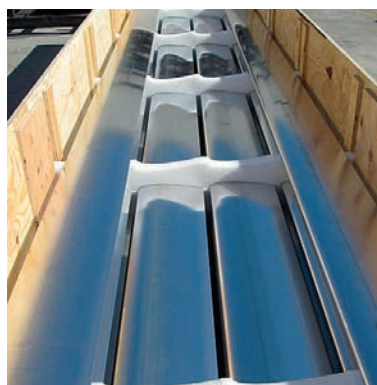
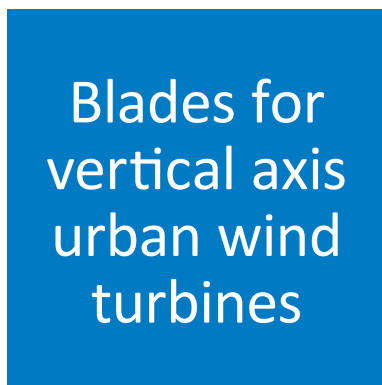
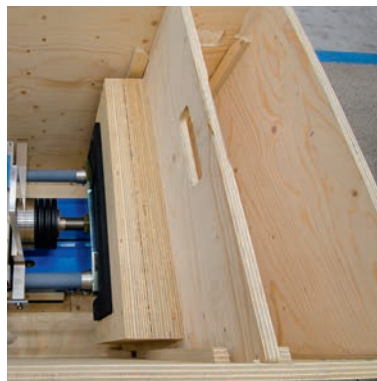
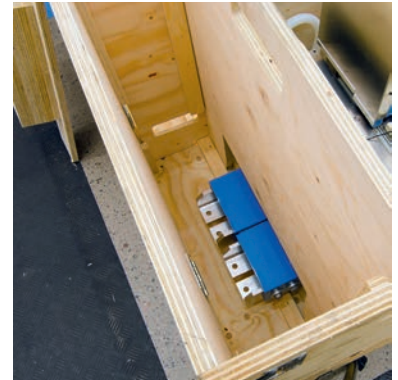
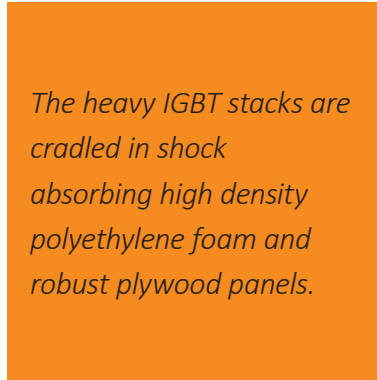


For over 25 years, Clip-Lok SimPak have specialized in packaging for demanding industries such as wind energy, automotive and defense. Our expertise in developing cost-saving packaging for large and heavy goods and sensitive equipment make Clip-Lok an excellent choice for these industries.

## Clip-Lok reusable packaging

The Clip-Lok box consists of plywood panels secured with our original spring steel clips. The box is easily assembled without the use of tools. Once assembled, it is strong enough to be stacked up to 10 high. The reusable box can be flatpacked after use and will then fill around 80% less space, minimizing return costs. The durability of our reusable packaging results in very low maintenance costs and the design ensures the best possible product protection.

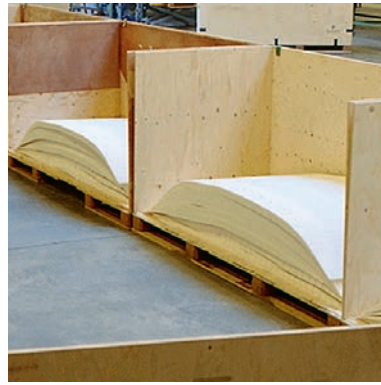
**Following are examples of Clip-Lok projects for the wind energy industry.**







## Foam for wind turbine blade construction



*The foam sheets are layered in-sequence according to size. The top and front of the box can be opened giving easy access to the sheets on the assembly line.*



## Chopper valves



*The adjustable top crossbar can support chopper valves of various heights. All of the dunnage fits in the bottom of the box. Product images are blurred to conceal design details.*



## Clip-Lok advantages

The Clip-Lok packaging system has many advantages over traditional packaging:

- **Reusable** - Typically over 100 transports with normal handling.
- **Custom designed** for optimum protection of goods and lowest possible transport costs.
- **High filling** rate due to thin, yet strong box walls.
- **Flat-packable** to minimize the cost of return shipping.
- **Low-cost maintenance** with simple replacement of components.
- **Stackable** either assembled or flat packed, saving space and storage costs.
- **No waste disposal costs** at the end of each trip.
- **Durable** - Despite pressure, vibration, impact, stacking etc. our boxes have a proven long lifetime.
- **Environmentally responsible** – Our boxes are made of FSC and PEFC certified wood and are ISPM 15 compliant.

## Expendable boxes



*Clip-Lok also offers sturdy  
expendable OSB boxes for  
one-way transport.*

---

## Global network

The Clip-Lok SimPak Group is a global network of partners covering marketing, sales, client liaison and manufacturing on four continents. The companies in the group are:

- **Committed** to the customer bases in each licensed territory.
- **Experts** in tailoring packaging designs for local requirements.
- **Prepared** to assist in setting up weather-resistance, vibration, drop and pressure tests either in-house or with official testing institutes.
- **Supported** by the global organization.

