

Clip-Lok SimPak™

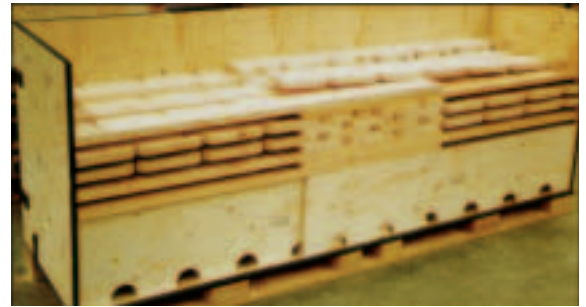
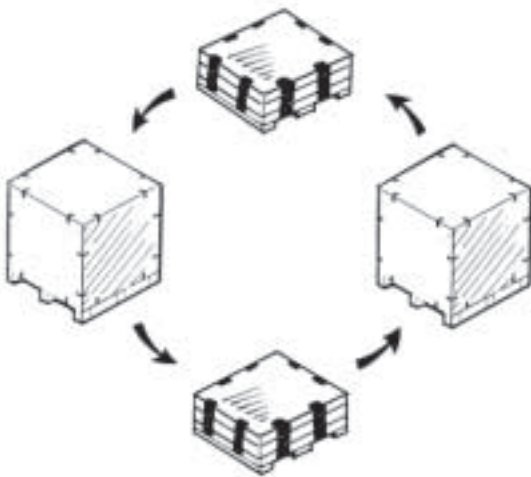
RE-USABLE COLLAPSIBLE CASES



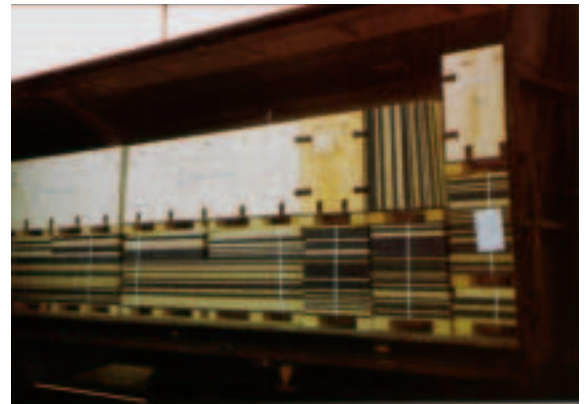
The case for the Environment

Clip-Lok is dedicated to protecting the environment by designing and manufacturing environmentally friendly products from recyclable materials in a manner that minimises waste and avoids emissions of materials that may harm the environment. As the global concerns over waste disposal and landfill grow, so re-usable is becoming the prime packaging objective of world governments and responsible corporations. Increasingly restrictive environmental legislation and taxation is being enforced and investment in Clip-Lok can provide customers with an environmentally responsible system and an enhanced corporate image.

- Re-usable again and again – many boxes are still in use after 100 trips
- No waste packaging to dispose of at the end of each trip
- Plywood made from managed forests
- Recyclable without hazard at the end of their lifespan with easy separation of metal and wood
- Reduced transportation usage, due to customised loading plans and flatpacked returns, cuts down on pollution
- Adherence to international environment laws



■ Re-usable dunnage packed for return journey.



■ Flatpacked Mercedes KD boxes and dunnage loaded for return.



■ Assembled and flatpacked boxes.

World-Wide Network

The Clip-Lok Group is a global network of independent companies covering marketing, sales, client liaison and manufacturing in over 20 countries. With many years experience in the re-usable packaging field, we provide customer support for international shipments at both the point of dispatch and on arrival.

- Established in 1982
- Worldwide quality control liaison
- Inter-company design team of qualified engineers
- Training programmes for end-users
- Professional after-sales service
- Maintenance programmes
- Supply of replacement components
- Global packaging programmes for international customers
- Co-operation with leasing partners
- Support of international environmental issues



Quality Guarantee

We guarantee our product against faulty workmanship from delivery of an order; any part which fails due to faulty material or faulty fabrication will be replaced free of charge.

Service Undertaking

We extend a four-way service commitment to all our customers:

Design & Engineering

Our unique Parametric Design Programme is available to design your packaging and dunnage. Our engineers will co-operate with you not only to meet the specifications of your product, but also to provide plans for transportation, storage and return of flatpacked boxes.

Testing

To re-assure you that our cases meet exacting requirements, we can assist in setting up weather-resistance, vibration, drop and pressure tests in-house or with official testing institutes.

Training

On-the-spot training is undertaken at dispatch and receival points to ensure the smooth running of the system from basic assembly tips to the implementation of transportation loading plans.

After-Sales

Our after-sales service, with full maintenance and replacement support, is available throughout our international network of offices.

The Best Case for Saving Money

Clip-Lok SimPak™ is a cost-saving packaging system. Our re-usable, collapsible plywood cases, tailor-made for every cargo, have proved their superior cost-efficiency and reliability for more than two decades. Investment payback is often within three trips. Clip-Lok's advantages over other packaging systems are many:

- Re-usable again and again
- Durable for up to 100 journeys
- Stackable erect or flat-packed, saving space and eliminating racking costs
- Collapsible to minimise return shipping costs
- No waste disposal costs at the end of each trip
- Low cost maintenance with simple replacement of components
- Customised designs provide optimum protection of goods and reduce breakages
- Quick and easy to assemble without special tools or power

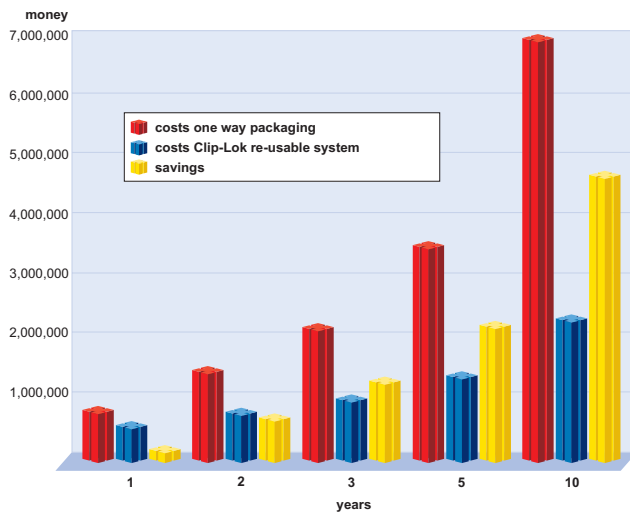


■ Liquid box capacity of 1,000 litres (300 gal) replaces 4 disposable drums.

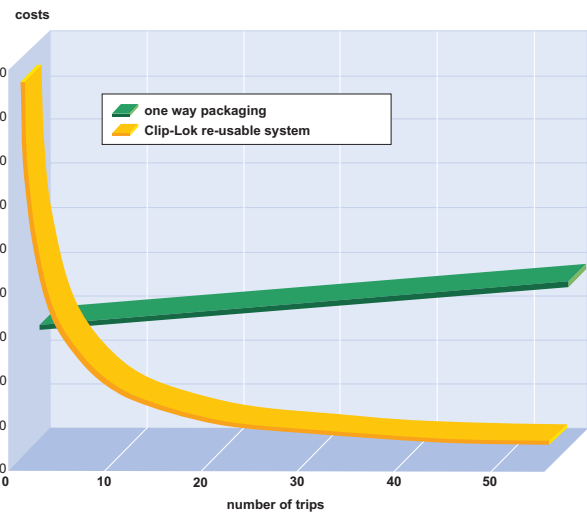


■ Customised packing plan for Mercedes KD programme.

Accumulated savings



Costs per trip



The Clip-Lok System

There are 2 main types of boxes but many variants

1) Traditional

The standard Clip-Lok box which was invented in 1982 consists of panels that are held together with detachable clips. Since its introduction, hundreds of thousands of units have been produced and are in use all over the world. Their versatility, durability and whole life costs have exceeded many of our customers' expectations. Once erected the strength allows stacking up to 10 high or 15 tonnes and their flat packed size minimises return costs.



1

Box flat packed

All components of a collapsed Clip-Lok box are held in one unit. The standard box can be erected or dismantled by one person in under two minutes. Collapsed height is usually 170-220mm depending on specifications.



2

Erecting the box

To assemble, place one of the side panels in the base groove. Secure it by snapping the clips into the slots. Continue with remaining panels in desired order.



3

Fitting the lid

The lid is placed into position and clipped to the sides. The assembled box is complete and ready for storage / dispatch with its contents. (The cargo can be packed at any stage of the assembly – no sides to 4 sides).

2) 2-P Box

To serve the high frequency of use and speed of turnaround in the demanding automotive industry, Clip-Lok developed the 2-P Box; "2 piece box". With only 2 loose parts, the lid and base, the sides can be detached if required. The panels are hinged to ensure rapid folding and assembly. The clips are secured in their individual positions. Dunnage is designed to fold into the internal void.



1

2-P box collapsed

All panels are hinged and mounted on the base with steel clips. Collapsed height is normally 250-300mm depending on specifications.



2

Erecting the box

Lift the hinged sides in numerical order and secure with the retained clips. Do not secure the top clips until the lid (if required) has been fitted.



3

Fitting the lid

The lid is placed into position and clipped to the sides. The top clips of the sides should remain loose until the lid is fitted to ensure it is correctly seated in the rebates. The erected box is complete and ready for storage / dispatch with its contents. The 2-P box can be erected / dismantled by one person in less than 25 seconds.

Tailor-Made Dunnage

The Clip-Lok system incorporates not only the tailor-made box and pallet, but also the vitally important interior dunnage. Using our engineering design experience, we work closely with customers to achieve maximum protection and stabilisation of their products.

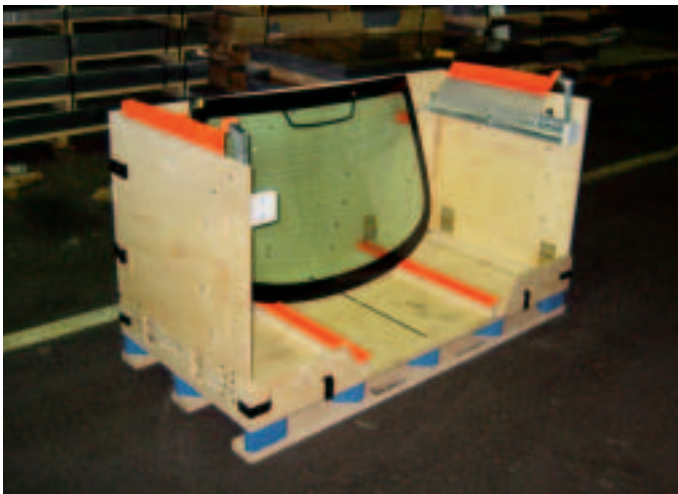
- Optimum protection of products
- Versatile computer-generated designs to exacting specifications
- Most appropriate materials used to suit each individual product
- Maximum use of space reduces transport costs and keeps contents secure
- All cargoes catered for, from glass to high-tech equipment to truck engines
- Dunnage provided for any size project, from one item to a complete CKD programme
- Many years' experience in designing dunnage for major corporations



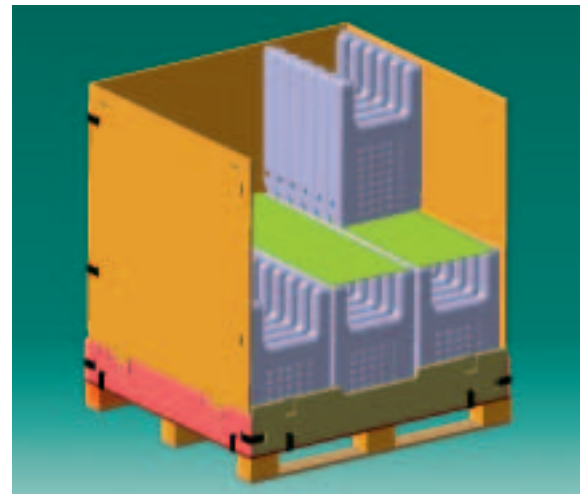
- *Foam dunnage circular and conically shaped for torpedo.*



- *Fragile printer packed to travel safely from Belgium to USA.*



- *2P-Box for windshields designed to prevent compression of rubber seals during transportation.*

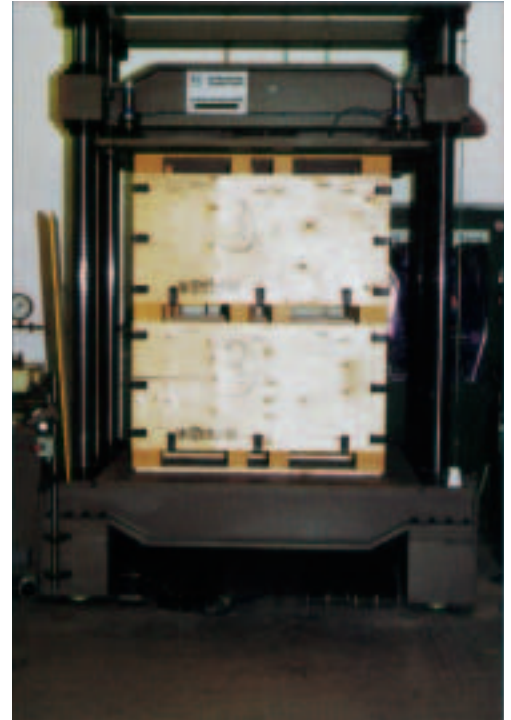


- *Advanced Catia CAD program is used for design of dunnages and for maximum packing efficiency*

A Case with Strong Standards

Clip-Lok boxes are immensely strong and stable. The boxes and spring steel clips have been tested exhaustively by official institutes around the world and in every case have met the most stringent of standards. Global corporations have also conducted exacting in-house research with Clip-Lok boxes reaching standards well above that which was required.

- United Nations approval for the transport of dangerous goods
- Armed Forces accreditation in a number of countries
- 12mm case proved to withstand 15 tonnes of pressure
- Liquid boxes tested successfully up to 1,000 litres (300 gal)
- Strong enough to stack up to ten high when loaded, without racking
- Vibration, stacking, impact and pressure tests passed on numerous occasions
- Official drop tests repeatedly prove the stability of box and clip
- Rain tests confirm that the rebated panels are weatherproof
- ISO 9000 or equivalent awarded or applied for in a number of countries



■ 12mm box undergoing 15 tonnes pressure test.



■ Vibration tests on box for motorbikes.



■ Boxes weighing 3,200 kg (7,200 lbs) stacked six high without racking.

Customised Cases

Clip-Lok cases are suitable for transporting all types of products, no matter how large, fragile or heavy. Tough, secure, durable and weather resistant, the cases are tailor-made to the customer's exact requirements, can be painted in corporate colours and printed with company logos.

- Flexible shapes and designs optimise transport space
- Customised designs maximise packing efficiency
- Easy to pack from the front, top or side
- Can be built around large or fragile items
- Half-panels easily removed for quality or customs inspections
- Two or four-way pallet entry
- Specialised overlays available



- *Delicate service terminal assembled throughout production inside a Clip-Lok case.*



- *5m (16ft) long box weighing 2 tonnes with fork-lift entry at the end to facilitate loading.*



- *Clip-Lok boxes are designed for the product and means of transport.*



- *Box for transport of 9 pieces of highly processed steel tubes.*



■ *The Clip-Lok system integrated into an automotive production line.*

Everything can be transported in a Clip-Lok case. This is reflected in the wide diversity of customers in many industries who entrust the safe shipment of their goods to the Clip-Lok system. These include:

- Liquids
- Automotive components and CKD
- Glass
- High-tech machinery
- Medical equipment
- Printed materials
- Telecommunications
- Military equipment and ammunition
- Foundry parts
- Laminates and overlays
- Tobacco
- Profiles
- Whiteware
- Rolls and coils



■ *10 full boxes, each weighing 3 tonnes, and 10 flatpacks.*



■ *Clip lever used to remove clips.*



■ *Tailor-made for a 5m (16ft) Opel car.*



■ *Clip-Lok cases are suitable for all types of rolls.*



■ *Fish oil is pumped into a 1,000 litre (300 gal) disposable plastic bag for discharge on delivery through the fast-flow outlet valve at the bottom.*



■ *Boxes stacked, flat-packed and clipped together for additional stability.*



Clip-Lok SimPak™

RE-USABLE COLLAPSIBLE CASES

